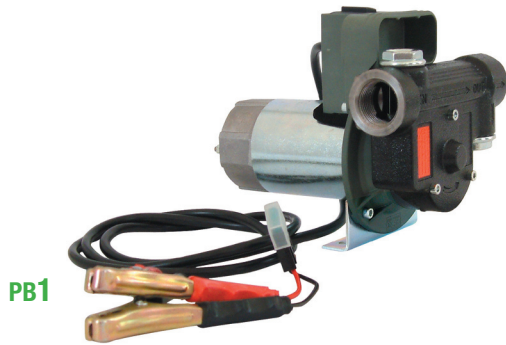
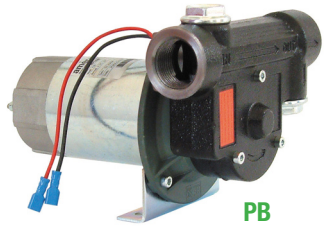


TECHNICAL SHEET
PB 45I 12/24V
PB1 45I 12/24V
 CC pump

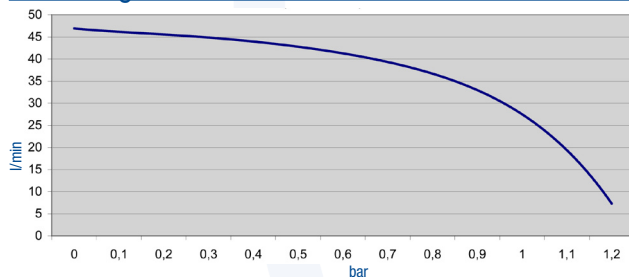


FEATURES

Voltage [V] CC
 Current-max [A]
 Motor weather protection rating
 On/Off Switch
 Length of cable [m]
 Fuse in cable [A]
 Duty Cycle [min]
 Flow rate-max [l/min]
 Pressure-Max [bar]
 Vacuum, dry height [m]
 Built in Bypass valve
 Pump Inlet Port [BSPP]
 Pump Outlet Port [BSPP]
 Material, pump housing
 Material rotor
 Material vanes
 Material Shaft seal
 Material other seal
 Built in Filter
 Suction hose [material,Ø,m,fitting]
 Discharge hose [material,Ø,m,fitting]
 Pump mounting feet on motor
 Operating Temperature min/max [°C]
 Fluid Viscosity max
 Approved fluids
 Forbidden fluids
 Sound Level, max from 1 meter [dB]
 Net weight of pump only [kg]
 Gross weight of shipping package [kg]

	PB 45I 12V	24V	PB1 45I 12V	24V
Voltage [V] CC	12	24	12	24
Current-max [A]	24	9	24	9
Motor weather protection rating	IP 55		IP 55	
On/Off Switch	no	no	yes	yes
Length of cable [m]	no	no	4	4
Fuse in cable [A]	no	no	30	15
Duty Cycle [min]	S2 30		S2 30	
Flow rate-max [l/min]	45		45	
Pressure-Max [bar]	1.2		1.2	
Vacuum, dry height [m]	2		2	
Built in Bypass valve	yes	yes	yes	yes
Pump Inlet Port [BSPP]	1"		1"	
Pump Outlet Port [BSPP]	1"		1"	
Material, pump housing	cast iron		cast iron	
Material rotor	steel sint.		steel sint.	
Material vanes	POM		POM	
Material Shaft seal	HNBR		HNBR	
Material other seal	NBR		NBR	
Built in Filter	no	no	yes	yes
Suction hose [material,Ø,m,fitting]	no	no	no	no
Discharge hose [material,Ø,m,fitting]	no	no	no	no
Pump mounting feet on motor	yes	yes	yes	yes
Operating Temperature min/max [°C]	-20/+50		-20/+50	
Fluid Viscosity max	diesel fuel		diesel fuel	
Approved fluids	diesel		diesel	
Forbidden fluids	gas, alcohol, water		gas, alcohol, water	
Sound Level, max from 1 meter [dB]	80		80	
Net weight of pump only [kg]	4.3		4.8	
Gross weight of shipping package [kg]	4.7		5.2	

Flow Range

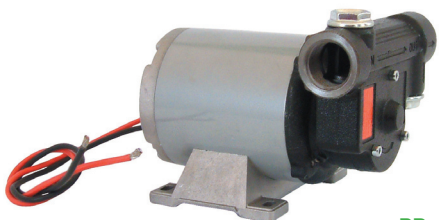


TECHNICAL SHEET

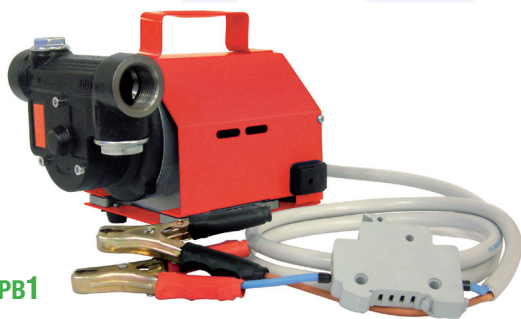
PB 60I 12/24V

PB1 60I 12/24V

CC pump

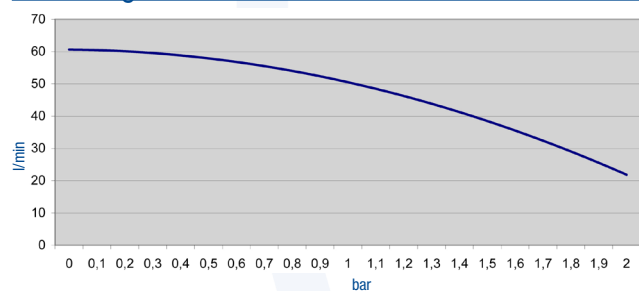


PB



PB1

Flow Range



FEATURES

	PB 60I 12V	24V	PB1 60I 12V	24V
Voltage [V] CC	12	24	12	24
Current-max [A]	28	18	28	18
Motor weather protection rating	IP 55		IP 55	
On/Off Switch	no	no	yes	yes
Length of cable [m]	no	no	4	4
Fuse in cable [A]	no	no	30	15
Duty Cycle [min]	S2 30		S2 30	
Flow rate-max [l/min]	60		60	
Pressure-Max [bar]	2		2	
Vacuum, dry height [m]	2		2	
Built in Bypass valve	yes	yes	yes	yes
Pump Inlet Port [BSPP]	1"		1"	
Pump Outlet Port [BSPP]	1"		1"	
Material, pump housing	ghisa		ghisa	
Material rotor	acciaio sint.		acciaio sint.	
Material vanes	POM		POM	
Material Shaft seal	HNBR		HNBR	
Material other seal	NBR		NBR	
Built in Filter	no	no	yes	yes
Suction hose [material,Ø,m,fitting]	no	no	no	no
Discharge hose [material,Ø,m,fitting]	no	no	no	no
Pump mounting feet on motor	yes	yes	yes	yes
Operating Temperature min/max [°C]	-20/+50		-20/+50	
Fluid Viscosity max	diesel fuel		diesel fuel	
Approved fluids	diesel		diesel	
Forbidden fluids	gas, alcohol, water		gas, alcohol, water	
Sound Level, max from 1 meter [dB]	80		80	
Net weight of pump only [kg]	7.6		9.7	
Gross weight of shipping package [kg]	8		10	