

2TCP (BACK TO BACK IMPELLER) TWO-STAGE CENTRIFUGAL PUMPS

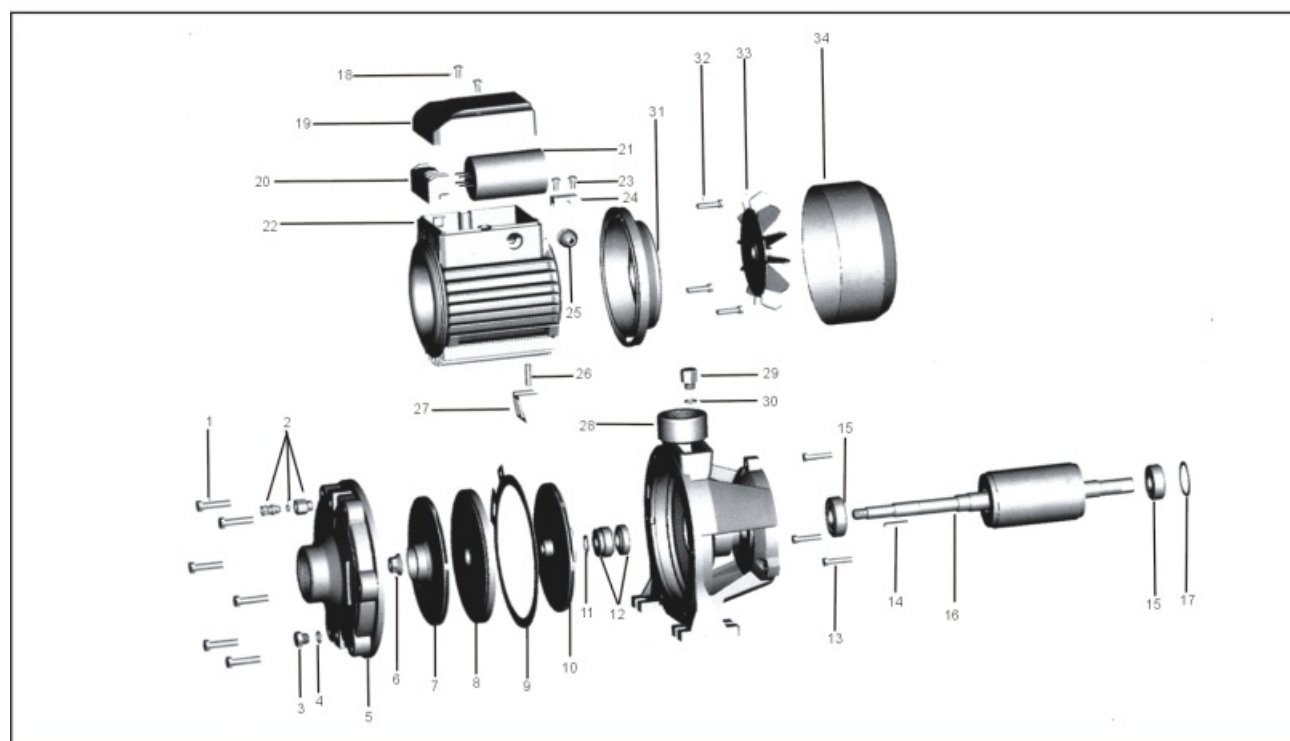


PERFORMANCE RANGE

- Flow rate up to 200 l/min (12m³/h)
- Head up to 66m

OPERATING LIMITS

- Suction lift up to 7 m
- Fluid temperature up to 40°C
- Maximum ambient temperature 40°C



N.	DESCRIPTION	N.	DESCRIPTION	N.	DESCRIPTION
1	Bolt	13	Bolt	25	Fairlead
2	Air valve assembly	14	Key	26	Stand pin
3	Discharge plug	15	Bearing	27	Stand
4	"O" ring	16	Rotor	28	Pump support
5	Pump casing	17	Split ring	29	Charge plug
6	Nut	18	Bolt	30	"O" ring
7	Impeller	19	Terminal cover	31	Driving cap
8	Disc	20	Terminal board	32	Bolt
9	Gasket	21	Capacitor	33	Fan
10	Impeller	22	Casing with wound stator	34	Fan cover
11	Snap ring	23	Screw		
12	Mechanical seal	24	Cable presser		

PUMP INSTALLATION AND APPLICATIONS

These pumps are suitable for pumping Clean water and fluids Which are not Chemically aggressive to the pump components. These pumps are an obvious choice Wherever there is a need for high head values hard to reach with single impeller pumps, all thanks to the following features: extremely high outputs, suitable for continuous and heavy-duty use and particularly adaptable to a Wide range of particular applications. 2TCP series pumps are extremely reliable, simple to use, quiet and virtually maintenance-free, finding many uses in domestic, civil and industrial applications, the automatic distribution of water from surge tanks, watering gardens, increasing the mains supply pressure, feeding boilers, cooling systems and fire-fighting units. These pumps should be installed in a covered area, protected against the weather.

PERFORMANCE

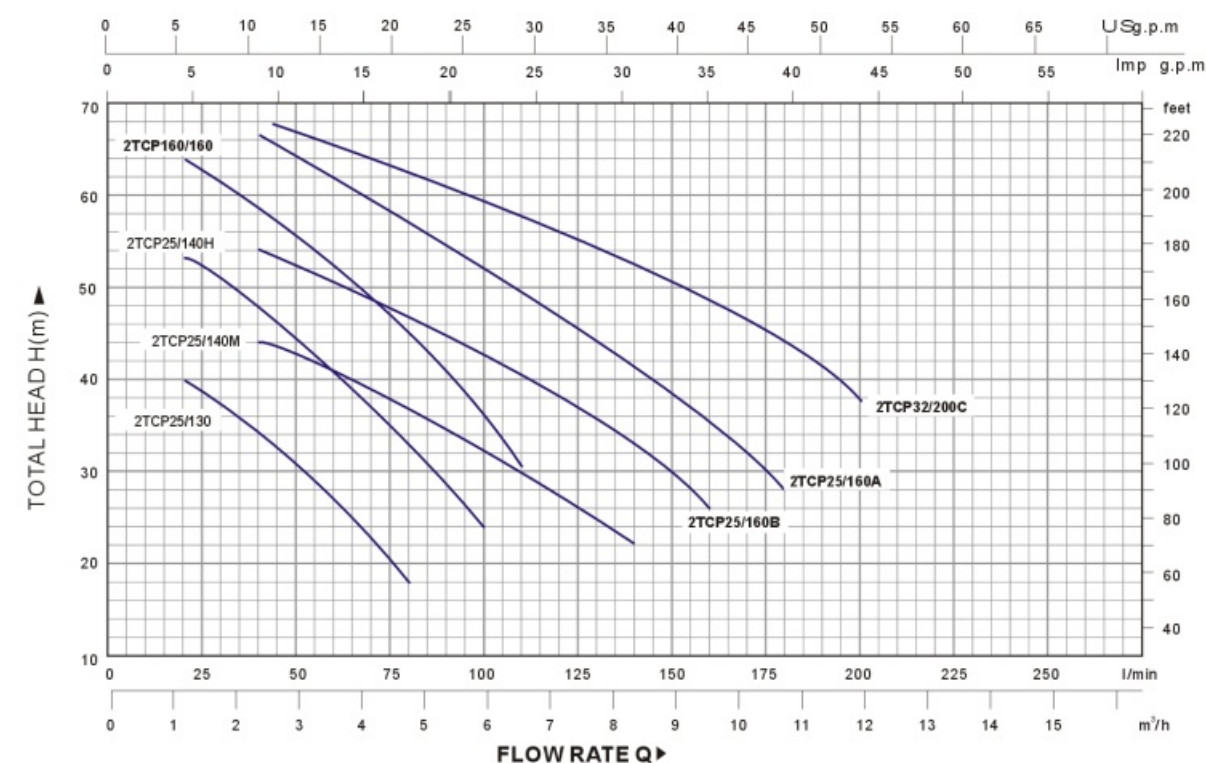
- Particularly ample and stable characteristic (high ratio between minimum and head values);
- Outputs having absolute values and tendentially flat curves;
- Flat absorption curves and tendentially motor overloading even during prolonged use;
- Good suction capacities both at low and high delivery rates.

STRUCTURAL CHARACTERISTICS

- Cast iron suction body
- Cast iron delivery body
- Brass impeller With centrifugal radial flow type
- Stainless steel shaft(Hi-Cr plated 45#steel up to 0.75kw)
- Stainless steel mechanical seal(graphite to ceramic or graphite to SiC)
- Protection Ip44
- With thermal overload protector in single phase motor up to 4 KW the remaining single phase motors and all three motors require and adequate external motor protector, with connections according to current standards
- C&U bearing or local bearing

WARRANTY: 1 YEAR(according to our general sales conditions)

PERFORMANCE CHART AT n=2900 l/min



MODEL	INLET/OUTLET	POWER	Q	1.2	1.8	2.4	3.0	3.6	4.2	4.8	5.4	6.0	6.6	7.5	8.4	9.6	10.8	12
Single phase	Inch	KW HP	l/min	20	30	40	50	60	70	80	90	100	110	125	140	160	180	200
2TCP25/130	1" x 1.25"	0.75 1.0	H	40	37	34	30	26	22	18								
2TCP25/140H	1" x 1.25"	1.1 1.5		53	51	49	46	42	38	34	29	24						
2TCP25/140M	1" x 1.5"	1.1 1.5		46	45	44	43	42	41	38	36	34	31	27	22			
2TCP160/160	1" x 1.5"	1.5 2	m	64	62	60	57	53	49	44	39	35	30					
2TCP25/160B	1" x 1.5"	1.5 2		56	55	54	53	52	50	48	46	44	41	37	33	26		
2TCP25/160A	1" x 1.5"	2.2 3		66	65	64	63	62	60	58	56	54	51	47	42	35	28	
2TCP32/200C	1.25" x 1.5"	3.0 4		-	-	66	65	64	63	62	62	60	59	56	53	49	45	40

H=TOTAL HEAD IN METERS. Q=FLOW RATE

2TCP (BACK TO BACK IMPELLER) TWO-STAGE CENTRIFUGAL PUMPS

PERFORMANCE RANGE

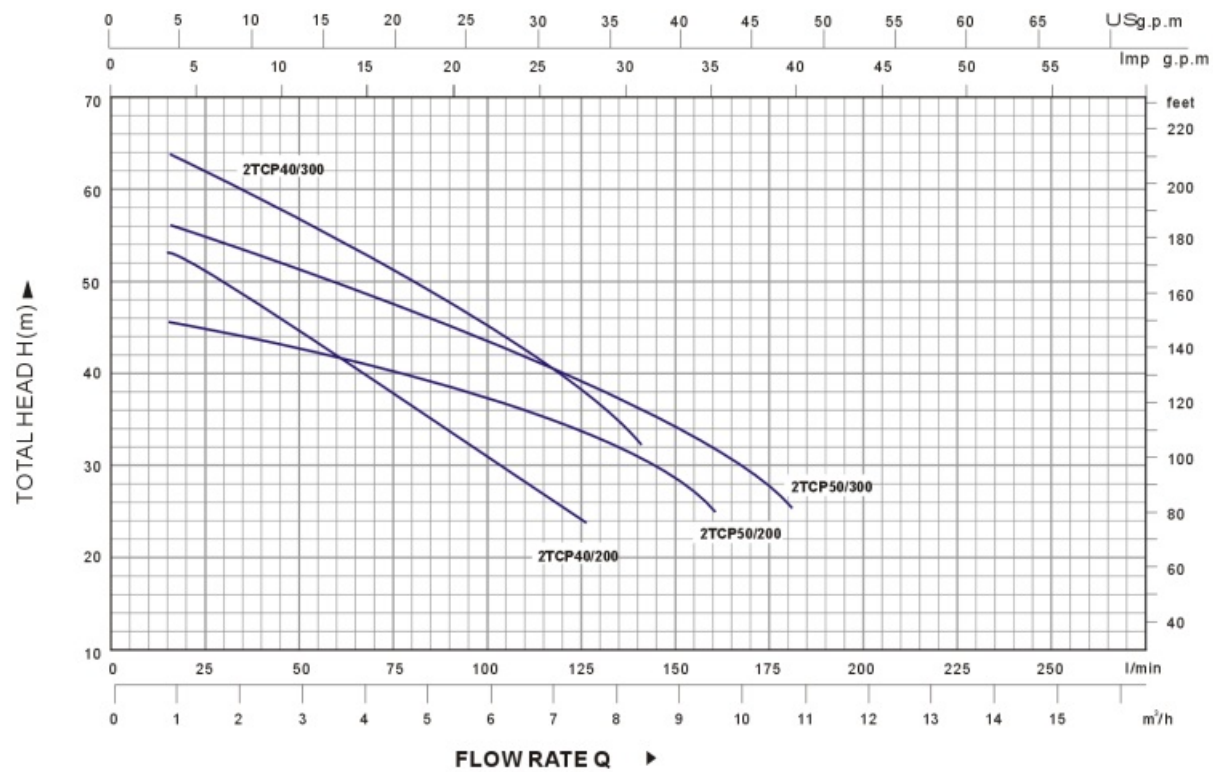
- Flow rate up to 180 l/min (10.8 m³ /h)
- Head up to 64m

OPERATING LIMITS

- Suction lift up to 7 m
- Fluid temperature up to 40°C
- Maximum ambient temperature 40°C



PERFORMANCE CHART AT n=2900 l/min



MODEL	INLET/OUTLET	POWER	Q	1.2	2.4	3.6	4.8	6.0	6.6	7.5	8.4	9.6	10.8
Single phase	Inch	KW	HP	l/min									
2TCP40/200	1.5" x 1.5"	1.5	2		20	40	60	80	100	110	125	140	160
2TCP50/200	2" x 2"	1.5	2	H	53	51	46	42	34	29	24		
2TCP40/300	1.5" x 1.5"	2.2	3	m	46	45	43	42	38	36	34	31	27
2TCP50/300	2" x 2"	2.2	3		64	62	57	53	44	39	35	30	
					56	55	53	52	48	46	44	41	37

H=TOTAL HEAD IN METERS. Q=FLOW RATE